



# DEPARTMENT OF DEFENSE

## Weekly Influenza Surveillance Summary



19 October 2010

### DoD Summary

- Clinic visits for influenza-like illness (ILI) have decreased over recent weeks across the military health system
- Molecular sequencing of influenza viruses continues to align with the current northern hemisphere vaccine strains
- Seasonal influenza immunization coverage for DoD is currently at 36% for active duty service members

### Laboratory Surveillance

[Naval Health Research Center](#) (Source: lab-based recruits, shipboard and border surveillance)

[View Report](#) [Contact](#)

- Currently one basic military training facility is experiencing elevated febrile respiratory illness rates (MCRD Parris Island)
- There have been no influenza cases in the 2010-2011 season among military recruits at any of the 8 training centers
- Sporadic cases of influenza B have been detected at surveillance clinics on the US-Mexico border in Southern California

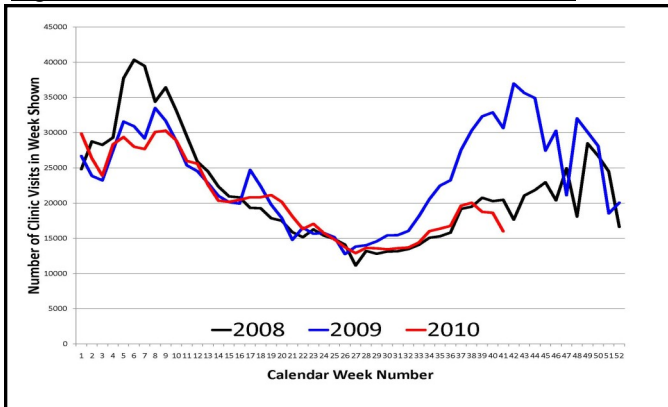
### Electronic Surveillance

[AFHSC](#) (Source: ESSENCE)

[Contact](#)

- ILI activity among military treatment facilities (MTFs) in the continental US (CONUS) have dropped over recent weeks but may have been influenced by the Columbus Day holiday weekend (Figure 1)
- ILI activity throughout Europe has stabilized and is consistent with activity from previous years (Fig. 2)

Fig 1: Clinic visit counts for ILI at US CONUS DoD



### AFHSC-GEIS Global Lab-Based Surveillance

#### SE Asia and Pacific:

- Nepal and the Philippines are currently experiencing the co-circulation of pH1N1 and influenza B
- Thailand and Cambodia continue to see the co-circulation of H3N2, pH1N1 and influenza B

#### Central America:

- Honduras, Guatemala are currently experiencing a stabilizing disease trend with the co-circulation of pH1N1 and H3N2

#### South America:

- AFHSC-GEIS partners in Peru are currently experiencing almost complete predominance of H3N2 among surveillance sites

#### East Africa:

- Kenya continues to see the predominance of H3N2 with a recent increase in influenza B cases among surveillance sites

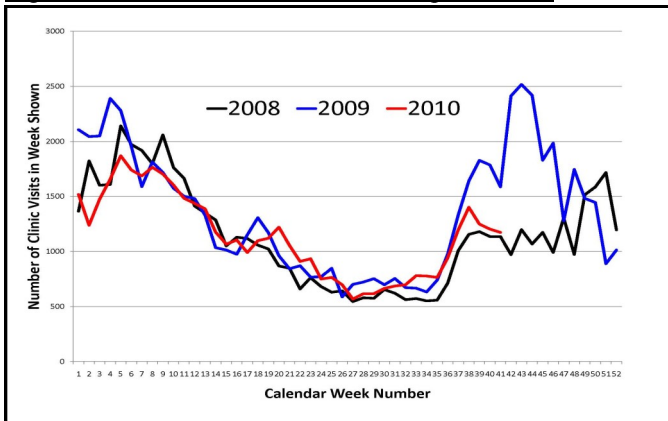
#### Central Africa:

- AFHSC-GEIS partners in Cameroon are beginning to see increases in H3N2 with the ongoing circulation of influenza B

#### Europe:

- European clinic visits for ILI continues to be due to non-influenza respiratory viruses

Fig 2: Clinic visit counts for ILI at European MTFs



### Influenza Immunization Coverage

(Active Component)	DoD-All*	ARMY	MARINES*	NAVY	COAST GUARD	AIR FORCE
Seasonal Influenza Vaccine	36%	42%	30%	47%	58%	51%

Sources: DoD ALL-DMSS, ARMY-MEDPROS, MARINES-DMSS, NAVY-MRRS, COAST GUARD-MRRS, AIR FORCE-AFCITA

\*Underestimates due to time lag in reporting systems

### AFHSC Suggested Sampling Strategy for Surveillance and Monitoring of Influenza Activity at DoD Installations

Samples Collected (Per Week): **6-10** samples from ILI (*Fever  $\geq 100.5^{\circ}F$  AND cough or sore throat*) patients seen at representative clinics on a given installation **AND ALL** patients hospitalized with respiratory symptoms or clinically diagnosed pneumonia; or part of case clusters (>5 cases) among high risk groups (*i.e. basic/advanced military trainees; shipboard or deployed service members; health care professionals*)