



# DEPARTMENT OF DEFENSE

## Weekly Global Influenza Surveillance Summary



3 November 2009

### DoD Summary

- No additional Pandemic H1N1 (pH1N1)-associated deaths were reported by the service public health hubs this week
- Significantly elevated influenza-like illness (ILI) and cases of pH1N1 are reported from the Republic of Korea, Europe and Hawaii
- The first pH1N1 vaccines for active duty service members were distributed this week to select locations

**ARMY:** Fort Carson (CO) has reported three pneumonia hospitalizations in the past week; all have since recovered  
Camp Zama (Japan) continues to see large numbers of ILI cases and absentees from the local DoD high school  
Army preventive medicine is investigating recent cluster of cases among cadets at the USMA (West Point)

**NAVY:** Cluster of pH1N1 cases reported aboard a large deck ship in San Diego  
Cluster of cases reported among Basic Underwater Demolition/SEAL (BUD/S) trainees in San Diego

**AIR FORCE:** Forty-one percent of Air Force bases are experiencing substantially elevated ILI

### Laboratory Summary

**USAFSAM:** Fifty-three percent of Air Force beneficiaries hospitalized for influenza had no documented co-morbidity

**NHRC:** Substantially elevated febrile respiratory illness (FRI) rates have been reported from Lackland AFB (TX), Fort Leonard Wood (MO) and Naval Recruit Training Center-Great Lakes (IL); all three sites are seeing co-circulation of pH1N1 and adenovirus type B.

**USACHPPMEUR:** Throughout Europe, pH1N1 remains the predominant strain of influenza with consistent activity in Germany, England and Spain

**BAACH (Korea):** Substantial increases in ILI and laboratory-confirmed pH1N1 have been reported over the past two weeks among Armed Forces beneficiaries stationed in the Republic of Korea

**NAMRU-2:** Investigators in SE Asia continue to see a co-circulation of pH1N1, seasonal H3N2 and influenza B

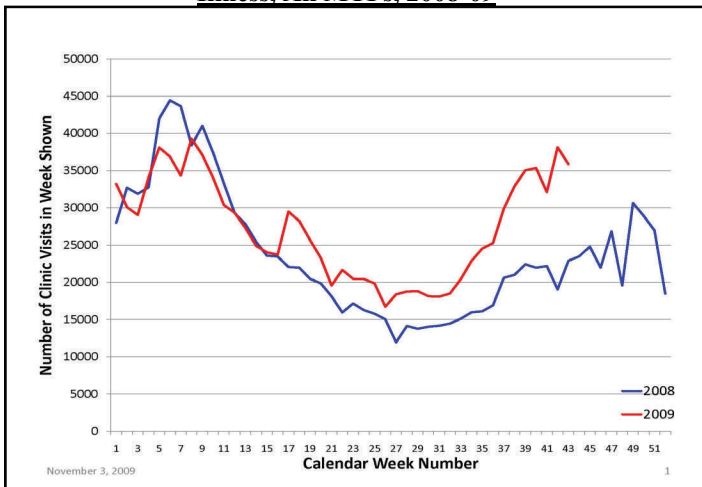
**USAMRU-Kenya:** Surveillance in East Africa is finding co-circulation and some co-infection of pH1N1 with influenza B

### Electronic Data Capture

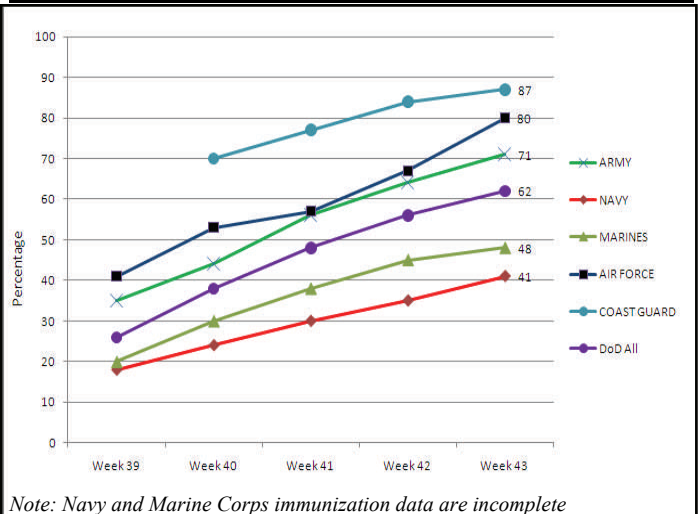
[AFHSC Influenza Report](#) (click to view report)

ILI and pneumonia and influenza (P&I) incidence rates have increased for active duty service members and other beneficiaries in all areas except for PACOM; EUCOM has the most notable increases when compared to rates from the two prior influenza seasons

**Graph 1: Weekly Clinic Visits for Incident Influenza-like Illness, All MTFs, 2008-09**



**Current Seasonal Flu Vaccine Coverage: Active Component**



### AFHSC Suggested Sampling Strategy for Future Surveillance and Monitoring of Influenza Activity at DoD Installations

Samples Collected (Per Week): **6-10** samples from ILI (Fever  $\geq 100.5^{\circ}F$  AND cough or sore throat) patients seen at representative clinics on a given installation **AND ALL** patients hospitalized with respiratory symptoms or clinically diagnosed pneumonia; or part of case clusters (>5 cases) among high risk groups (i.e. basic/advanced military trainees; shipboard or deployed service members; health care professionals)

### Reported pH1N1 Deaths

	AD	FM	RET
ARMY	1		1
NAVY			
MARINES			
AIR FORCE	1	2	1
COAST GUARD			