



DEPARTMENT OF DEFENSE

Weekly Global Influenza Surveillance Summary



Tuesday, 18 August 2009

DoD Summary

- Increased activity from pandemic H1N1 (pH1N1) throughout the Pacific Area of Responsibility (AOR) (Guam, Okinawa, HI)
- Greater than 98% of all influenza-positive samples from US Armed Forces beneficiaries are pH1N1
- No evidence of increased severity of disease or changes in clinical presentation of pH1N1 cases

ARMY: Fort Jackson (SC) has seen a recent increase in pH1N1 cases among recruits with no notable increase in disease severity
 NAVY: USS Boxer (CA) and USS Nimitz (CA) are seeing increases in shipboard pH1N1 cases
 Recruit Training Center-Great Lakes (IL) has had recent increases in pH1N1 among recruits
 MARINES: Marine Corps Recruit Depot-San Diego (CA) and Parris Island (SC) experiencing sustained co-circulation of pH1N1 and adenovirus
 AIR FORCE: Air Bases from Okinawa and Guam continue to see sustained pH1N1 activity from active duty service members
 Lackland AFB continues to see co-circulation of adenovirus type 14 and pH1N1 among basic and advanced trainees

AFHSC Suggested Sampling Strategy for Future Surveillance and Monitoring of Influenza Activity at DoD Installations*

Samples Collected (Per Week):

6-10 samples from ILI (*Fever $\geq 100.5^{\circ}F$ and cough or sore throat*) patients seen at representative clinics on a given installation
 AND

ALL patients hospitalized with respiratory symptoms or clinically diagnosed pneumonia; or part of case clusters (>5 cases) among high risk groups (*i.e. basic/advanced military trainees; shipboard or deployed service members; health care professionals*)

*Guidance and sampling strategy is subject to change depending on size and scope of disease activity affecting DoD populations

Laboratory Summary

USAFSAM: Elevated ILI activity and lab-confirmed results at Andersen AB in Guam and Kadena AB, Okinawa
 USAFSAM will begin sequencing and testing for antiviral resistance of pH1N1 isolates

NHRC: Substantially elevated febrile respiratory illness (FRI) rates at RTC Great Lakes, Fort Jackson and USCG Cape May
 NHRC is working with preventive medicine partners in San Diego to respond to cases aboard large deck ships at port

LRMC: Over the past two weeks, samples submitted to LRMC have increased with pH1N1 cases increasing in Germany

Global Reporting: *Since April 01, 2009, the AFHSC has received reports on over 400 DoD beneficiaries and civilian employees from OCONUS MTFs in 12 countries. The AFHSC will report OCONUS cases only after the host country has formally notified the WHO Regional Office. The AFHSC is working closely with Department of Health and Human Services and the US Department of State to coordinate confirmation of case reporting to the host countries where US troops are located. These steps are necessary to maintain a consistent reporting structure under the requirements of the International Health Regulations (2005).*

Electronic Data Capture

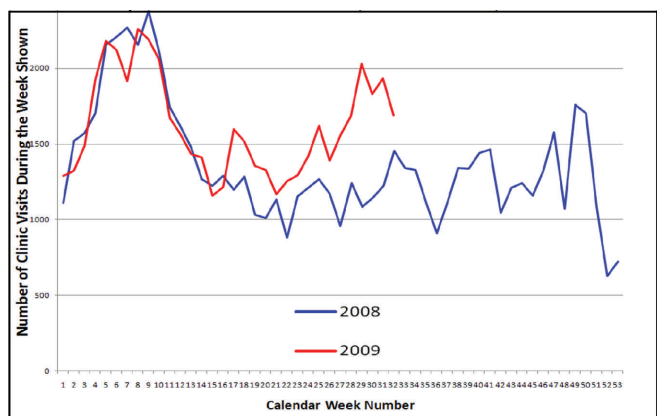
ESSENCE

- Continued downward trend in ILI clinic visits for MHS as a whole (Graph 1), CONUS and Europe
- Prolonged, sustained elevation of ILI visit counts for Pacific Region when compared to 2008
- Recent increases in ILI clinic visits for MTFs in South Carolina (Graph 2) and Georgia when compared to 2008

Graph 1: Weekly Clinic Visits for Influenza-like Illness, MHS wide



Graph 2: Weekly Clinic Visits for Influenza-like Illness, South Carolina MTFs



For inquiries or comments please contact AFHSC/GEIS. (matthew.c.johns@us.army.mil)