



# DEPARTMENT OF DEFENSE

## Global Surveillance Summary-Novel Influenza A/H1N1

Tuesday June 16, 2009

### Influenza A/H1N1-Case Counts for Armed Forces Beneficiaries (Since 1 April 2009)

SERVICE	New Cases (Since 12 June Report)					Cumulative Cases				
	AD	FM	REC	RET	UNK	AD	FM	REC	RET	UNK
ARMY	73	79				202	179	1		
NAVY	51	11				248	138	2	3	
MARINES	19	4	3			85	20	15	1	
AIR FORCE	6	8				73	63	4	6	
COAST GUARD						3				
SERVICE UNK							2	1		
<b>TOTAL</b>	<b>NEW CASES: 254</b>					<b>CUMULATIVE CASES: 1046</b>				

Deadline for service-specific reporting to AFHSC is every Tuesday and Friday at 1100 EST

AD- Active Duty FM- Family Member  
REC- Recruit RET- Retiree UNK-Unknown

### Armed Forces Health Surveillance Center Contact

ESSENCE: Monitoring of clinic visits due to influenza-like illness (ILI) continues to follow a downward trend in all regions.

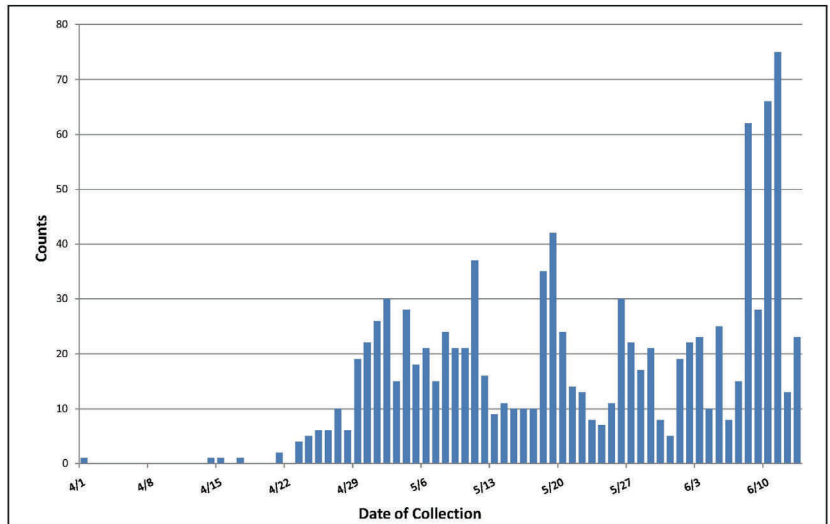
#### New Sites Reporting (Since 12 June Report)

Site	State	Cases
Chicago Heights REC Station	IL	1
Fort Carson	CO	1
Fort Drum	NY	6
Fort Hood	TX	2
McConnell AFB	KS	1
NH Corpus Christi	TX	1
Patrick AFB	FL	1
USS Vella Gulf	VA	2

Note: Shipboard cases are reported to health departments of port-of-call where illness occurred



Probable/Confirmed Cases of Novel Influenza A/H1N1  
United States Armed Forces Beneficiaries  
(Dates of collection and case counts are provisional)



#### AFHSC Reporting

AFHSC will provide reports on novel influenza A/H1N1 activity among Armed Forces beneficiaries every Tuesday and Friday. Reports can be found on the [DoD PI Watchboard](#) under 'Surveillance and Detection'

#### -IMPORTANT-

**DoD MTFs should report all novel H1N1 cases from laboratories outside of DoD to the appropriate service hubs listed below**

#### SERVICE WEBLINKS & CONTACTS

- ARMY- [USACHPPM Contact](#)
- NAVY/MARINES- [NMCPHC, Contact](#)
- AIR FORCE- [USAFSAM Contact](#)
- COAST GUARD- [Contact](#)

#### Populations at Increased Risk, Localized Activity or Potential Clusters

Service	State	Recent Cases*	Total
<b>NAVY</b>			
RTC Great Lakes	IL	6	33
USS Nimitz	At Sea	16	42
USS Iwo Jima	VA	28	51
<b>AIR FORCE</b>			
McGuire AFB	NJ	11	14
<b>ARMY</b>			
Fort Bliss	TX	43	91
West Point	NY	9	11
<b>Multi Service</b>			
US Deployed Forces-Kuwait	OCONUS	0	68
National Capital Region (NCR)	DC	15	40
Seattle-Tacoma Area/USS Abraham Lincoln	WA	79	157

\*Recent cases include all presenting to an MTF within the last 10 days