



DEPARTMENT OF DEFENSE

Global Surveillance Summary-Pandemic Influenza A(H1N1)

Tuesday June 30, 2009

Pandemic Influenza A(H1N1)-Case Counts for Armed Forces Beneficiaries (Since 1 April 2009)

SERVICE	New Cases (Since 26 June Report)					Cumulative Cases				
	AD	FM	REC	RET	UNK	AD	FM	REC	RET	UNK
ARMY	2	11				297	256	1		13
NAVY	46	25	1	1		389	213	8	10	
MARINES	23	8	1			142	35	20	2	
AIR FORCE	29	20	10	3		165	128	23	12	
COAST GUARD						8				
SERVICE UNK							2	1		
TOTAL	NEW CASES: 180					CUMULATIVE CASES: 1725				

Deadline for service-specific reporting to AFHSC is every Tuesday and Friday at 1100 EST

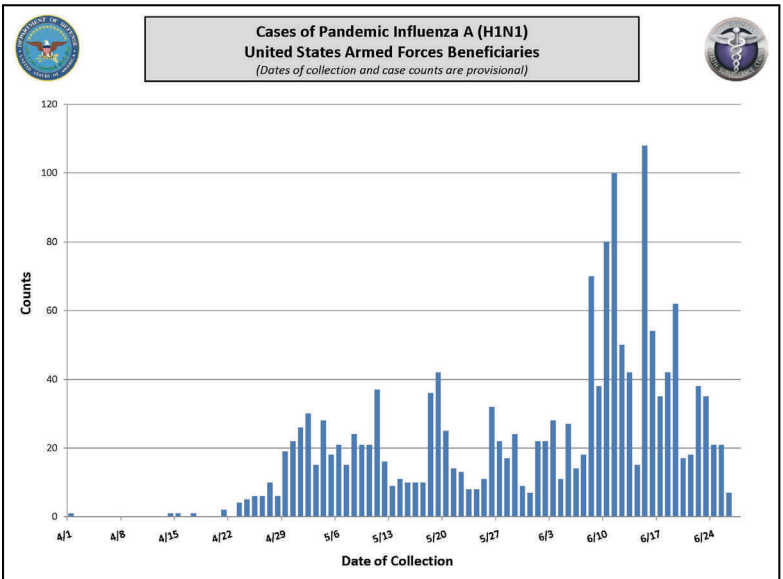
AD- Active Duty FM- Family Member
REC- Recruit RET- Retiree UNK-Unknown

Armed Forces Health Surveillance Center Contact

ESSENCE Monitoring: A steady downward trend continues across the Military Health System (MHS) for influenza-like illness (ILI) with the exception of a few recruit training centers in California and South Carolina that are reporting infection with respiratory viruses other than influenza.

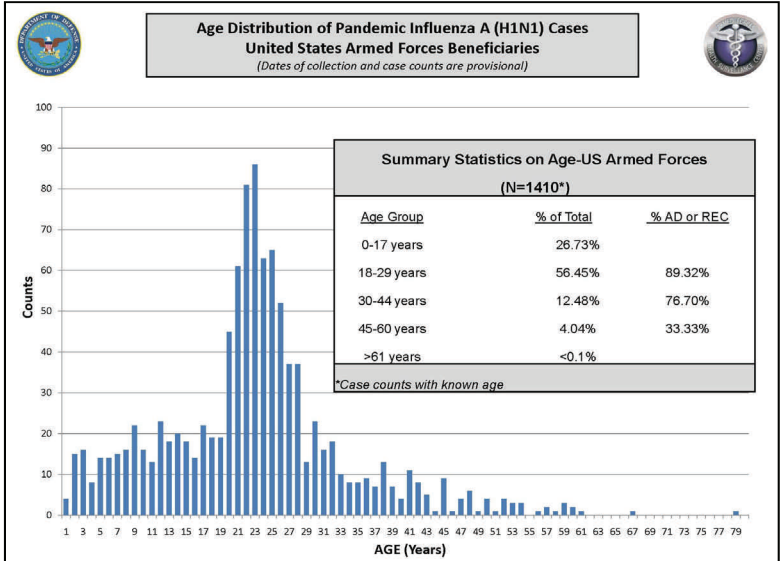
Populations at Increased Risk, Localized Activity or Potential Clusters				
Service	State	Recent Cases*	Total	
NAVY				
	RTC Great Lakes	IL	5	46
	NH Pensacola	FL	22	49
	NH Beaufort	SC	6	10
	USS Carl Vinson	VA	4	4
MARINES				
	Camp Lejeune	NC	4	47
	Camp Pendleton	CA	15	52
AIR FORCE				
	McGuire AFB	NJ	12	38
	Lackland AFB (Recruits)	TX	12	18
	Travis AFB	CA	51	60
ARMY				
	Fort Bliss	TX	9	165
	Fort Jackson	SC	11	15
	Fort Belvoir	VA	11	11
Multi Service				
	National Capital Region (NCR)	DC	14	91

*Recent cases include all presenting to an MTF within the last 10 days
(new sites of potential clusters in RED)



New Sites Reporting (Since 26 June Report)

Site	State	Cases
USS Bulkeley	Sea	1
USS Carl Vinson	VA	4
USS Harry S. Truman	Sea	2
Davis-Monthan AFB	AZ	2
Dover AFB	DE	1
Elmendorf AFB	AK	1
Peterson AFB	CO	1
Wright-Patterson AFB	OH	1



-IMPORTANT-
DoD MTFs should report all Pandemic Influenza A (H1N1) case results from reference laboratories to the appropriate service hubs listed below

SERVICE WEBLINKS & CONTACTS

ARMY- [USACHPPM Contact](#)
NAVY/MARINES- [NMCPHC, Contact](#)
AIR FORCE- [USAFSAM Contact](#)
COAST GUARD- [Contact](#)